



WORKING PAPER SERIES

**Dynamic Forecasts of Qualitative Variables:
A Qual VAR Model of U. S. Recessions**

Michael J Dueker

Working Paper 2001-012B
<http://research.stlouisfed.org/wp/2001/2001-012.pdf>

September 2001
Revised September 2003

FEDERAL RESERVE BANK OF ST. LOUIS
Research Division
411 Locust Street
St. Louis, MO 63102

The views expressed are those of the individual authors and do not necessarily reflect official positions of the Federal Reserve Bank of St. Louis, the Federal Reserve System, or the Board of Governors.

Federal Reserve Bank of St. Louis Working Papers are preliminary materials circulated to stimulate discussion and critical comment. References in publications to Federal Reserve Bank of St. Louis Working Papers (other than an acknowledgment that the writer has had access to unpublished material) should be cleared with the author or authors.

Photo courtesy of The Gateway Arch, St. Louis, MO. www.gatewayarch.com

Dynamic Forecasts of Qualitative Variables:
A Qual VAR Model of U.S. Recessions

August 2003

Michael Dueker*
Federal Reserve Bank of St. Louis
P.O. Box 442, St. Louis, MO 63166
mdueker@stls.frb.org; fax (314) 444-8731

* The content is the responsibility of the author and does not represent official positions of the Federal Reserve Bank of St. Louis or the Federal Reserve System.

Dynamic Forecasts of Qualitative Variables: A Qual VAR Model of U.S. Recessions

Abstract

This article presents a new Qual VAR model for incorporating information from qualitative and/or discrete variables in vector autoregressions. With a Qual VAR, it is possible to create dynamic forecasts of the qualitative variable using standard VAR projections. Previous forecasting methods for qualitative variables, in contrast, only produce static forecasts. I apply the Qual VAR to forecasting the 2001 business recession out of sample and to analyzing the Romer and Romer (1989) narrative measure of monetary policy contractions as an endogenous variable in a VAR. Out of sample, the model predicts the timing of the 2001 recession quite well relative to the recession probabilities put forth at the time by professional forecasters. Qual VARs—which include information about the qualitative variable—can also enhance the quality of density forecasts of the other variables in the system.

JEL classifications: **F42, C25, C22**

Key words: **Vector Autoregressions, Dynamic Forecasts, Recessions, Probit models**

The vector autoregression (VAR) is a standard tool for forecasting macroeconomic time series, in large part because VARs produce dynamic forecasts that are consistent across equations and forecast horizons. Forecasts are dynamic if the system's $k + 1$ period-ahead forecasts are functions of the system's k period-ahead forecasts. Until now, however, the VAR approach has not been applied to forecasting qualitative variables, although qualitative variables have been used as exogenous variables in VARs [e.g., Eichenbaum and Evans (1995)]. Consequently, previous methods of forecasting qualitative variables have not produced dynamic forecasts; instead, the norm is to make static forecasts using lagged values of the explanatory variables, where the minimum lag length equals the forecast horizon. Estrella and Mishkin (1998) and Birchenhall et al. (1999), for example, employ a simple probit or logit model to forecast the probability of a business recession. This paper, in contrast, introduces methods for producing dynamic forecasts of a qualitative variable within a VAR framework. Such a model can be called a 'Qual VAR.' A useful by-product of the Qual VAR is that dynamic forecasts involving the qualitative variable can improve the density forecasts of other variables in the VAR system, relative to forecasts that do not use information from the qualitative variable.

I apply the Qual VAR to forecasting U.S. business recessions—a binary indicator variable defined by the National Bureau of Economic Research. As the NBER business cycle dating committee points out strenuously, their widely-cited business cycle turning points are judgmental and not a deterministic function of observable data. The NBER approach to defining turning points stands in contrast to Zellner, Hong and Min (1991), Canova and Ciccarelli (2000) and others who forecast turning points that are defined to be a deterministic function of output growth. In a second application, I highlight another advantage of the Qual VAR approach: its ability to treat a qualitative variable

as an endogenous variable in a VAR. As an example, I analyze the Romer and Romer (1989) narrative measure of monetary policy contractions. Previous analysis of the effects of Romer and Romer episodes assumed that each episode was completely exogenous [Romer and Romer (1989); Eichenbaum and Evans (1995); Christiano, Eichenbaum and Evans (1999)]. Shapiro (1994) questions the exogeneity assumption by showing that such monetary policy contractions were somewhat predictable based on the macroeconomic environment at the time.

The ubiquity of qualitative and/or discrete variables in macroeconomics suggests that a melding of vector autoregressions—a workhorse empirical tool in macroeconomics—with limited-dependent-variable econometrics would be useful. The empirical analysis of binary indicators of business recessions is only one example. Macroeconomists also study qualitative variables concerning currency and banking crises [Eichengreen, Rose and Wyplosz (1995); Kaminsky and Reinhart (1999)], monetary policy shifts [Romer and Romer (1989); Eichenbaum and Evans (1995); Christiano, Eichenbaum and Evans (1999); Boschen and Mills (1995)], exchange rate interventions [Lewis (1995); Kaminsky and Lewis (1996)], and the effects of currency unions [Rose and van Wincoop (2001); Frankel and Rose (2002)]. In the examples listed above, the qualitative variable is assumed to be exogenous. In many of these cases, however, a VAR approach where all variables are treated as endogenous might be useful. Interest rate policy instruments that move by discrete amounts are also used in VARs—for example, Bernanke and Blinder (1992) and Sims (1992)—and the Qual VAR could be applied to discrete changes to the target federal funds rate.

The Qual VAR builds on the single-equation dynamic ordered probit model of Eichengreen, Watson and Grossman (1985) and Dueker (1999). The Qual VAR is dynamic because lagged dependent variables appear on the right-hand side. A related model is

the multivariate probit from Chib and Greenberg (1998) and Chib (2000). The Chib and Greenberg (1998) approach differs from a Qual VAR model in that the former would address the serial correlation found in time series through autoregressive errors, rather than autoregressive variables. In multivariate macroeconometrics, the distinction between autoregressive variables and autoregressive errors is significant. With autoregressive errors, forecasting would require a supplementary model to forecast the covariate variables. In a system of autoregressive variables—such as a VAR—model-consistent forecasts of all variables are readily available. Moreover, the multivariate probit is set up to emphasize cross-sectional correlations among a set of qualitative variables and the coefficients on exogenous covariates. VARs, in contrast, are better suited to a small system of endogenous variables and a relatively large number of autoregressive lags. For this reason, we extend in this paper the dynamic probit model to a vector autoregressive setting.

Other related models include the autoregressive conditional hazard (ACH) model from Hamilton and Jorda (2002) and the autoregressive conditional multinomial (ACM) model from Engle and Russell (1998) and Herrera (2002). In the event that one wants to specify these models with a richer set of explanatory variables than the dependent variable’s own history, an auxiliary model to forecast the covariates is needed with either the ACH or ACM models. In a Qual VAR, in contrast, all of the covariates are part of the same vector autoregressive system, so no auxiliary model is needed for multi-step forecasts.

1. QUAL VAR AND ITS ESTIMATION

Our starting point is the the dynamic probit model of Eichengreen, Watson and Grossman (1985), which serves as a time-series probit because it includes an autoregressive dependent variable. As in simple probit models, one can assume that a continuous latent

variable, y^* , lies behind the binary dependent variable, $y \in \{0, 1\}$:

$$\begin{aligned}
y_t &= 0 \text{ if } y_t^* \leq 0 \\
y_t &= 1 \text{ if } y_t^* > 0 \\
y_t^* &= \rho y_{t-1}^* + X_{t-1}\beta + \epsilon_t \\
\epsilon_t &\sim N(0, 1)
\end{aligned} \tag{1}$$

where X_{t-1} is a set of explanatory variables. The fact that the latent variable, y^* , is an autoregressive variable makes the dynamic probit suitable as an equation in a VAR system—and this paper extends the single-equation dynamic probit to a VAR system.

The maximum-likelihood estimation procedure of Eichengreen et al. (1985) requires numerical evaluation of an integral for each observation in order to obtain the density, h , of the latent variable y_t^* , where ϕ is the standard normal density and I_t is the information available up to time t :

$$h(y_t^* | I_t) = 1/\sigma_\epsilon \int_{l_{t-1}}^{U_{t-1}} \phi(y_t^*/\sigma_\epsilon) h(y_{t-1}^* | I_t) dy_{t-1}^*, \tag{2}$$

where $\{l_t, U_t\} = \{-\infty, 0\}$ if $y_t = 0$, or else they equal $\{0, \infty\}$ if $y_t = 1$. Because numerical evaluation of these integrals is time-consuming and approximate, Dueker (1999) demonstrated the relative simplicity of estimating the dynamic probit model through Markov Chain Monte Carlo (MCMC)—an approach also applied in Dueker (2000), Dueker and Wesche (2003) and Chauvet and Potter (2003). MCMC estimation of the dynamic probit extends the work of Albert and Chib (1993), who present MCMC methods for static probit models. In cases like the dynamic probit, where the joint density of y_t^* and y_{t-1}^* is difficult to evaluate, data augmentation via MCMC offers a tractable method to generate (i.e., augment the observed data with) a sample of draws from the joint distribution of the y^* through a sequence of draws from the respective conditional distributions. Data augmentation in the present context allows one to treat augmented values of y_s^* , $s \neq t$,

as observed data when evaluating the conditional density of y_t^* . Thus, one conditions the density of y_t^* on a *value*, instead of a *density*, of y_{t-1}^* , making the problem much simpler than recursive evaluation of the integral in equation (2). This argument in favor MCMC estimation methods applies, and is even amplified, if the latent variable y^* is in a VAR, as opposed to a single equation. Most importantly, in a VAR, standard forecasting methods can be applied to predict future y^* .

1.1 MCMC sampling for the Qual VAR

A Qual VAR model with k variables and p lags can be written as

$$\Phi(L)Y_t = \mu + \epsilon_t, \tag{3}$$

where

$$Y_t = \begin{pmatrix} X_t \\ y_t^* \end{pmatrix}$$

consists of macroeconomic data, X_t , plus the latent variable y^* ; $\Phi(L)$ is a set of $k \times k$ matrices, from $L = 0, \dots, p$, with the identity matrix at $L = 0$, μ is a set of intercepts, and ϵ are mean-zero normally-distributed disturbances. The covariance matrix of the forecast errors is denoted Σ . The parameters that require conditional distributions for MCMC estimation are Φ —the VAR regression coefficients—the covariance matrix Σ , and the latent variable y^* .

MCMC is an attractive estimation procedure for the Qual VAR because the conditional distribution of the latent variable is straightforward to derive, given the VAR coefficients; in turn, the conditional distributions of the VAR coefficients simply have the OLS distribution, given values for the latent variable. The key idea behind MCMC estimation is that after a sufficient number of iterations, the draws from the respective conditional

distributions jointly represent a draw from the joint posterior distribution, which often cannot be evaluated directly [Gelfand and Smith (1990)].

Markov Chain Monte Carlo estimation of this model consists of a sequence of draws from the following conditional distributions, where superscripts indicate the iteration number:

$$\begin{aligned}
&\text{VAR coefficients} \sim \text{Normal} \\
&\quad f(\Phi^{(i+1)} \mid \{y_t^{*(i)}\}_{t=1,\dots,T}, \{X_t\}_{t=1,\dots,T}, \Sigma^{(i)}) \\
&\text{Covariance matrix} \sim \text{inverted Wishart} \\
&\quad f(\Sigma^{(i+1)} \mid \{y_t^{*(i)}\}_{t=1,\dots,T}, \{X_t\}_{t=1,\dots,T}, \Phi^{(i+1)}) \\
&\text{latent variable} \sim \text{truncated Normal} \\
&\quad f(y_t^{*(i+1)} \mid \Phi^{(i+1)}, \{y_j^{*(i+1)}\}_{j<t}, \{y_k^{*(i)}\}_{k>t}, \{X_t\}_{t=1,\dots,T}, \Sigma^{(i+1)}). \quad (4)
\end{aligned}$$

Conditional on a set of values for y^* and Σ , the VAR coefficients, Φ , are normally distributed with the mean and variance of the ordinary least squares estimator, as implied by an uninformative prior. The covariance matrix is sampled from the inverted Wishart distribution, also with an uninformative prior, as discussed by Chib and Greenberg (1996):

$$\Sigma^{-1} \mid \Phi, Y \sim \mathcal{W}_k(T, \sum_t \hat{\epsilon}_t \hat{\epsilon}_t') \quad (5)$$

A single period's value of latent variable, y^* , has a truncated normal distribution, where y^* is not allowed to be negative during expansions or positive during recessions. Using the conditional mean, μ_{y^*} , and variance, σ_{y^*} , derived below, $(y^* - \mu_{y^*})/\sigma_{y^*}$, is in the interval $(-\infty, 0 - \mu_{y^*}/\sigma_{y^*}]$ during recessions and $(0 - \mu_{y^*}/\sigma_{y^*}, +\infty)$ during expansions. Let the relevant bounds be denoted (l, u) and F be the cumulative normal density function.

To sample from the truncated normal, we first draw a uniform variable, v , from the interval $(F(l), F(u))$. The truncated normal draw for $(y^* - \mu_{y^*})/\sigma_{y^*}$ is then $F^{-1}(v)$.

In both applications presented below, the MCMC sampler was run for a total of 10,000 iterations. The first 5000 iterations were discarded to allow the sampler to converge to the posterior distribution. Experimentation showed nearly identical estimates resulted when more than 5000 initial iterations were discarded. Even though the OLS point estimates of the VAR coefficients almost never implied a root at or above one, the draw of randomized VAR coefficients from the OLS distribution sometimes did imply an explosive root. These draws were rejected and re-sampled.

1.2 Conditional distribution of the latent variable

We need to derive the full conditional distribution of $y_t^* | \{Y_{-t}\}, X_t$, where $\{Y_{-t}\}$ is the full vector time series except for time t data. In the application to recession forecasting, the latent variable y^* might be called a business cycle index because its distance from zero indicates how many standard deviations the economy is from a business cycle turning point. The full conditional distribution of $y_t^* | \{Y_{-t}\}, X_t$ can be expressed as

$$f(y_t^* | \{Y_{-t}\}, X_t) \propto f(Y_t | \{Y_{-t}\}). \quad (6)$$

Thus, we start by deriving the conditional distribution of $Y_t | \{Y_{-t}\}$. Once this conditional distribution has been calculated, results about conditional relationships among multivariate normals can be used to derive $f(y_t^* | X_t)$. Because the autoregressive order is p , the value of Y_t will affect the relationship between the observed data and the shocks for the next $p + 1$ periods:

$$\epsilon_t = Y_t - \mu - \phi_1 Y_{t-1} - \dots - \phi_p Y_{t-p}$$

$$\begin{aligned}
\epsilon_{t+1} &= Y_{t+1} - \mu - \phi_1 Y_t - \dots - \phi_p Y_{t-p+1} \\
&\vdots \\
\epsilon_{t+p} &= Y_{t+p} - \mu - \phi_1 Y_{t+p-1} - \dots - \phi_p Y_t
\end{aligned} \tag{7}$$

Let κ_j be the known part of ϵ_j , given that $\{Y_{-t}\}$ are all assumed known:

$$\begin{aligned}
\epsilon_t &= Y_t + \kappa_t \\
\epsilon_{t+1} &= \kappa_{t+1} - \phi_1 Y_t \\
&\vdots \\
\epsilon_{t+p} &= \kappa_{t+p} - \phi_p Y_t
\end{aligned} \tag{8}$$

The density of $(\epsilon_t, \dots, \epsilon_{t+p})$ can be written as a function of Y_t :

$$\begin{aligned}
&-\frac{1}{2} (Y_t + \kappa_t)' \Sigma^{-1} (Y_t + \kappa_t) \\
&-\frac{1}{2} (\kappa_{t+1} - \phi_1 Y_t)' \Sigma^{-1} (\kappa_{t+1} - \phi_1 Y_t) \\
&\vdots \\
&-\frac{1}{2} (\kappa_{t+p} - \phi_p Y_t)' \Sigma^{-1} (\kappa_{t+p} - \phi_p Y_t),
\end{aligned} \tag{9}$$

where Σ is the cross-equation covariance matrix of the errors, which are uncorrelated across time. After collecting all cross-products, we have

$$Y_t \mid \{Y_{-t}\} \sim N(C^{-1}D, C^{-1}), \tag{10}$$

where

$$C = (\Sigma^{-1} + \phi_1' \Sigma^{-1} \phi_1 + \dots + \phi_p' \Sigma^{-1} \phi_p)$$

and

$$D = (-\Sigma^{-1} \kappa_t + \phi_1' \Sigma^{-1} \kappa_{t+1} + \dots + \phi_p' \Sigma^{-1} \kappa_{t+p}).$$

Thus, it is convenient to define $\hat{Y}_t = Y_t - C^{-1}D$, where

$$f(\hat{Y}_t) \propto \exp\{-.5\hat{Y}_t' C \hat{Y}_t\}$$

Without loss of generality, we can assume that the latent variable y_t^* is the last element in Y_t and partition C accordingly, where C_{11} is a scalar:

$$C = \begin{pmatrix} C_{00} & C_{01} \\ C'_{01} & C_{11} \end{pmatrix}.$$

After collecting terms, we have

$$\hat{y}_t^* | \hat{X}_t \sim N(-C_{11}^{-1}C_{01}\hat{X}_t, C_{11}^{-1}). \quad (11)$$

The conditional mean of y_t^* is the conditional mean of \hat{y}_t^* plus the last element of $C^{-1}D$. From this distribution, values of y_t^* are sampled as truncated normals, depending on whether the NBER classifications specify a positive or negative value of y_t^* .

Exact conditional distributions can be derived in similar fashion for the first p observations. I found, however, that sampling from the exact distributions was very slow numerically because of the large matrices involved. For these conditional distributions, it is necessary to invert a matrix that is $k^2p^2 \times k^2p^2$. For this reason, I use instead an Accept-Reject Metropolis-Hastings (AR-MH) algorithm to sample the first p values of the latent variable at iteration $(i + 1)$. To do this, I used the following AR-MH algorithm:

1. For a given value of j , $1 \leq j \leq p$, draw a proposed value of y_j^{pd} from the proposal density, $f^{pd}(\cdot)$, which has a mean and variance equal to that of the conditional distribution of y_{p+1}^* . The proposed values are taken from a truncated normal distribution that respects the recession/expansion categories of the first p time periods.
2. Given current iteration values for $\Phi, \Sigma, y_{j+1}^*, \dots, y_{j+p}^*$ calculate the densities of the data, Y_j, \dots, Y_{j+p} , at both the proposed value of y_j^{pd} and at last iteration's value $y_j^{*(i)}$.
3. Calculate

$$R_d = \frac{f^{pd}(y_j^{pd})f(Y | y_j^{pd})}{f^{pd}(y_j^{*(i)})f(Y | y_j^{*(i)})} \quad (12)$$

The acceptance probabilities for y_j^{pd} are

$$\begin{cases} R_d & \text{for } R_d < 1 \\ 1 & \text{for } R_d \geq 1 \end{cases}$$

Experimentation showed that the results were not much affected from using AR-MH sampling of the first p values of the latent variable, as opposed to Gibbs sampling from the exact conditional distributions.

2. A QUAL VAR OF U.S. RECESSIONS

Quarterly data from 1968:Q1 to 2000:Q3 are used to estimate a Qual VAR that includes information on U.S. recessions. The data used to estimate the Qual VAR were compiled on December 8, 2000, so they do not reflect any revisions to GDP data that occurred after the onset of recession in March 2001. In using the Qual VAR for end-of-sample forecasting, it is assumed to be known during 2000:Q3 that the economy was not in recession at that time. For that particular date, this assumption is not controversial, but at other points in time such an assumption could be problematic. For this reason, I focus in this article on out-of-sample forecast results for 12 quarters from 2000:Q4-2003:Q3. Future work can focus on recursive estimation of Qual VARs with real-time data sets, which would have to include real-time data on whether the economy was believed to be in recession.

The recession and expansion classification comes from the National Bureau of Economic Research (NBER). The dates of business cycle turning points are in Table 1. The NBER Business Cycle Dating Committee chooses turning point months, which means that one can think that the first half of a turning point month can be considered the last part of the previous recession or expansion and the second half of the month can be

considered part of the next phase of the business cycle. (This interpretation was provided by Ben Bernanke, former member of the NBER committee.) For this reason, the March 2001 peak, for example, implies that the second quarter of 2001 would be the first quarter of the recession.

The set of macroeconomic variables, X , in the forecasting VAR include the quarterly growth rate of chain-weighted real GDP, quarterly inflation in the consumer price index, the term spread between yields on 10-year Treasury bonds and 3-month Treasury bills, and the effective federal funds rate. Variables such as these have been used to produce forecasts of recessions in simple probit models [see, for example, Estrella and Mishkin (1998)]. Moreover, each of these variables ought to reflect sources of cyclical strength or weakness. The slope of the yield curve provides a glimpse at whether the bond market anticipates a future drop in procyclical short-term interest rates. The federal funds rate is the monetary policy instrument, and Romer and Romer (1989) claim that some monetary policy contractions have precipitated recessions.

With the latent variable, y^* , that lies behind the NBER recession/expansion classifications, the VAR has five variables and includes five lags of each variable. The choice of $p = 5$ lags was done *a priori* and reflects the frequent use of a lag length in VARs equal to one year plus one lag. Figure 1 shows the posterior mean of the latent business cycle index, y^* , with the NBER recessions shaded. A virtually identical version of Figure 1 was presented to the Board of Directors of the Little Rock Federal Reserve branch on December 15, 2000. The latent variable looks the way one would expect, in that the 1969-70 and 1990-91 recessions do not fall as far below zero as the other recessions. In the out-of-sample period, the latent variable was expected to decline, with point estimates that dip below zero, although the 80 percent probability interval includes zero throughout the 12 quarters. The end-of-sample forecasts of the latent variable also predicted a rather

tepid recovery from recession in comparison with the slope the latent variable had coming out of previous recessions. Figure 2 highlights the out-of-sample period that starts at the end of 2000. The dynamic forecast of the latent business cycle variable from the Qual VAR dips below zero for almost precisely the period that the NBER subsequently defined to be a recession.

The Qual VAR also produces recession probabilities. Dynamic Qual VAR forecasts of recessions are based on simulations of the VAR system k periods from the forecast date. The forecasted recession probability is the percentage of iterations where the simulated latent variable was negative k periods into the future.

$$\hat{Y}_{t+k} = E[\hat{Y}_{t+k} | \hat{Y}_{t+k-1}] + \Sigma^{\frac{1}{2}} e_{t+k} \quad (13)$$

where \hat{Y} denotes a simulated value and e is a vector of k independent random standard normals. If the simulated value of the latent variable, \hat{y}^* , which is the last element in \hat{Y} , is less than zero in 30 percent of the simulation iterations, then the forecasted probability of recession is 30 percent:

$$\text{Prob}(y_{t+k} = 0 | I_t) = 1/5000 \sum_{i=1}^{5000} J(\hat{y}_{t+k}^{*(i)} < 0) \quad (14)$$

where J is an indicator function that equals one when $\hat{y}_{t+k}^{*(i)} < 0$ and zero otherwise.

Table 2 presents out-of-sample recession probabilities from the Qual VAR. The rise and fall of the probabilities closely matches the subsequently declared NBER recession period. The fact that the recession probabilities exceed 50 percent has to be viewed in light of previous recession forecasting methods. Birchenall et al. (1999) investigate ways to translate model-based recession probabilities into yes/no recession signals. They consider two key recession probability levels: 50 percent and 16 percent, which is their sample average of the percent of time spent in recessions. Dueker (2002) calculated the

optimal probability level for six-month-ahead yes/no recession signals in the case where the loss function puts greater weight on not missing a recession than on falsely predicting a recession. The cut-off probability in that signaling exercise was 28 percent. Moreover, for horizons greater than two quarters ahead, the optimal cut-off probability would likely be even lower. Viewed in this context, the Qual VAR forecast five quarters ahead of a recession probability above 50 percent for 2001:Q3 and 2001:Q4 is a rather strong signal of recession. This is especially true in light of the difficulties that professional forecasters and the leading indicators had in anticipating the 2001 recession. For example, among Blue Chip forecasters in their November 2000 survey, the mean probability that the U.S. economy would enter a recession within the next 12 months was only 23 percent. In addition, in the September 2001 survey of Blue Chip forecasters, which was completed just prior to September 11, only 13 percent believed that the United States had slipped into recession by that date [Source: Blue Chip Economic Indicators, various issues]. Stock and Watson (2003) document the shortcomings of the variables that enter the Conference Board's Index of Leading Indicators in signaling the economic downturn in 2001.

The Qual VAR of U.S. recessions also produces useful density forecasts of the macroeconomic variables for 12 quarters out of sample. Here I compare the density forecasts of GDP growth and CPI inflation between the Qual VAR and the ordinary VAR that does not include information on the NBER recession classifications. I do not report density forecasts for the federal funds rate because neither model comes close to predicting the extraordinary drop in the federal funds rate to 1 percent by June 2003. Both models are estimated by Markov Chain Monte Carlo to simulate 80 percent probability intervals around the point forecasts. In Figures 3 and 4, three points are plotted for each time period. The left and right points are surrounded by a vertical line indicating the 80 percent probability interval corresponding to the ordinary VAR and Qual VAR, respectively. The middle point is the actual data as of September 8, 2003. As shown in Figure 3, the

80 percent probability interval for output growth contains the actual data in 8 out of 11 out-of-sample quarters for the Qual VAR, versus 5 out of 11 for the ordinary VAR. Figure 4 shows that the Qual VAR's 80 percent probability interval contains the actual data in 7 out of 11 forecasts, versus 5 out of 11 for ordinary VAR. Thus, the Qual VAR probability interval comes closer to capturing 80 percent of the actual observations. It appears that the Qual VAR does better in terms of forecasting how uncertain future outcomes of the state of the business cycle will affect the range of possible outcomes of output growth and inflation.

Another interesting feature of the out-of-sample forecasts is that the Qual VAR predicts a greater than 50 percent chance of recession in 2001, despite the fact that the point forecasts for GDP growth are all above zero. Instead, the point forecasts for GDP growth dip to about 0.3 percent per quarter before rebounding. Of course, the Qual VAR does not impose the rule of thumb that a recession consists of at least two negative quarters of GDP growth. It is also interesting to note that, until the July 2002 annual revision to GDP, the data showed only one slightly negative quarter in 2001:Q3. After this substantial revision, however, real GDP growth showed three negative quarters, as shown in Figure 3. Hence, the out-of-sample forecasts would conform much better with the real-time data releases than to subsequently revised numbers. The Qual VAR also bolsters the decision of the NBER dating committee to announce a March 2001 business cycle peak on November 26, 2001—a time when the data showed only one slightly negative quarter of GDP growth that easily could have been revised away in the following two months. The Qual VAR forecasts suggest that a recession not marked by two negative quarters of GDP growth can be consistent with the procedures used to date previous NBER recessions. This is especially true in circumstances where employment and output growth do not coincide due to strong productivity growth, as was the case throughout much of the period after 2000.

3. A QUAL VAR OF ROMER POLICY CONTRACTIONS

Romer and Romer (1989) carefully studied Federal Reserve documents to identify points in time when monetary policymakers explicitly decided to initiate disinflation through recession if necessary. These decision points have become known as ‘Romer dates’ and are used in empirical analysis as a binary qualitative variable. The Qual VAR approach allows qualitative variables such as Romer and Romer (1989) monetary policy contractions to be an additional endogenous variable in the system, rather than an exogenous regressor. For Romer dates, we used monthly data because quarterly data could mix the initial monetary policy decision with its subsequent effects. The data we include in the VAR are output growth in terms of industrial production (*IP*), inflation in personal consumption expenditure prices (*INF*), the federal funds rate (*FF*) and the term spread (*TERM*) between the yield on 10-year Treasury bonds and the federal funds rate. In order to include a long history of Romer and Romer episodes, monthly data from January 1959 to September 1996 were used. The months classified as Romer dates in Choi (1999) and other studies are: March 1959; December 1965; December 1968; April 1974; August 1978; December 1988. This five-variable Qual VAR includes six monthly lags of the data.

The principal aim here is to examine whether the conclusions about the effects of Romer and Romer monetary policy episodes on the economy remain the same when this qualitative variable is treated as endogenous and not exogenous. I am particularly interested in whether the impulse responses to a ‘Romer shock’ differ from those reported in Christiano, Eichenbaum and Evans (1999), where Romer dates are treated as exogenous. Interestingly, when Christiano, Eichenbaum and Evans discuss the proper way to bootstrap confidence intervals for impulse responses to Romer shocks, they acknowledge that with different shock histories, the Federal Reserve would have chosen different Romer dates. This is tantamount to saying that Romer dates are endogenous, as a Qual VAR would

assume from the outset.

The recursive variable ordering I used to identify impulse responses is

$$\{IP, INF, ROMER, TERM, FF\},$$

where *ROMER* is the latent variable behind the Romer dates. This ordering purposely puts the interest rates after the Romer latent variable because interest rates can respond within the month in which a Romer policy contraction is initiated. The impulse responses calculated this way reflect all unanticipated changes in the latent variable, even those changes that do not cause the latent variable to cross zero. In presenting impulse responses to Romer shocks, however, I normalize the shock to reflect the size of shock that occurred on a typical Romer date, rather than a shock equal to one sample standard deviation, which is considerably smaller. In this way, I can compare results with Christiano, Eichenbaum and Evans (1999) regarding the maximal impact of a Romer date on the level of the federal funds rate, for example.

The impulse responses of all five variables to a Romer shock are shown in Figure 5. The impulse responses of output growth to shocks are not as smooth or persistent as the responses of the level of output would be, but I included variables in stationary form because the latent Romer variable must be stationary by definition: monetary policy does not wander arbitrarily far from conditions where a Romer-type policy contraction would take place. Indeed, the response of output growth is choppy for the first three months, but is significantly negative between four and ten months after a Romer date. Inflation displays the well-known price puzzle but only between four and six months. The maximal impact on the federal funds rate from a Romer shock is a little more than 200 basis points and occurs only three months after the Romer date. This effect is greater than the estimate of 100 basis points from Christiano, Eichenbaum and Evans (1999). It is perhaps surprising that by treating the Romer date as an endogenous variable, we find a larger

maximal impact on the federal funds rate. It turns out that the latent variable often needs a shock of several standard deviations to generate the observed Romer dates. This maximal impact is rather imprecisely estimated, however, because of the small number of Romer dates. Consequently, the signs and shapes of the Romer impulse responses are estimated more reliably than the magnitudes of the responses. As one might expect, the effect of a Romer shock on the latent Romer variable is very transitory, given that Romer dates do not occur in bunches.

Given that the Qual VAR allows all variables to be contemporaneously correlated, it is interesting to look at the posterior means of the elements of the covariance matrix Σ that correspond with Romer shocks. Table 3 reports the posterior means and 90 percent probability intervals for these covariances. Because a Romer policy contraction occurs when the latent variable drops below zero, innovations to the latent Romer variable in the direction of policy contraction are associated with a positive innovation in the federal funds rate and a negative innovation in inflation. The 90 percent probability intervals for these two covariances either do not contain zero or they barely contain it in the case of inflation. Together, these two covariances suggest that Romer dates are associated with increases in real interest rates, as one might expect.

4. CONCLUSIONS

This article presents a new Qual VAR model for incorporating information from qualitative variables in vector autoregressive models. With a Qual VAR, it is straightforward to create dynamic forecasts of the qualitative variable using standard VAR projections. Previous forecasting methods for qualitative variables, in contrast, only provide static forecasts or they require an auxiliary model to forecast the covariates. The Qual VAR did

quite well in predicting the 2001 recession out of sample. Previous models that attempt to convert recession forecast probabilities into yes/no signals of recession suggest that a 50 percent recession probability is a strong signal of recession. As an augmented VAR, the Qual VAR—which includes information about the qualitative variable in the form of a truncated normal latent variable—can also enhance the quality of density forecasts of other variables in the system, such as output growth, relative to the VAR without the qualitative variable. In the application to business cycle fluctuations, the Qual VAR density forecasts widened appropriately to reflect uncertainty about the future state of the business cycle.

Estimation of the Qual VAR takes place through Markov Chain Monte Carlo (MCMC) and only requires draws from normal and uniform distributions. The conditional distributions required to sample the latent variable that lies behind the qualitative variable are straightforward and easy to implement, with the exception of the first p values of the latent variable conditional on a VAR(p) process. For the first p values, the sizes of the matrices needed to sample from the conditional distribution are large enough to serve as a bottleneck in terms of computation time. For this reason, I sampled the first p values using an Accept-Reject Metropolis-Hastings algorithm that is not computationally demanding.

The Qual VAR also addresses the problematic assumption that qualitative variables can be used as exogenous regressors in VARs. In VARs, it is common to include qualitative variables to delineate different macroeconomic regimes, such as a gold standard or a fixed exchange rate peg. The assumption that these regime choices are exogenous to the macroeconomic environment is highly questionable. In a Qual VAR, such qualitative variables are simply appended to the VAR system and treated as any other endogenous variable. I illustrate this endogeneity feature of the Qual VAR in an application of Romer

and Romer (1989) monetary policy contractions. The Qual VAR—provided a recursive ordering assumption frequently used in VARs—implies a set of impulse responses to a shock to the latent variable behind a Romer contraction without assuming that the Romer contraction is an exogenous regressor.

REFERENCES

- Albert, J.H. and Chib, S. (1993), "Bayesian Analysis of Binary and Polychotomous Response Data," *Journal of the American Statistical Association* 88, 669-79.
- Bernanke, B.S. and Blinder, A.S. (1992), "The Federal Funds Rate and the Channels of Monetary Transmission," *American Economic Review* 82, 901-21.
- Birchenhall, C.R., Jessen, H., Osborn, D.R. and Simpson, P. (1999), "Predicting U.S. Business-Cycle Regimes," *Journal of Business and Economic Statistics* 17, 79-97.
- Boschen, J. and Mills, L. (1995), "The Relation between Narrative and Money Market Indicators of Monetary Policy," *Economic Inquiry* 33, 24-44.
- Canova, F. and M. Ciccarelli (2000), "Forecasting and Turning Point Predictions in a Bayesian Panel VAR Model," working paper 443, Universitat Pompeu Fabra.
- Chauvet, M. and Potter, S. (2003), "Predicting Recessions using the Yield Curve," *Journal of Forecasting*, forthcoming.
- Chib, S. (2000), "Bayesian Analysis of Correlated Binary Data," in *Generalized Linear Models: A Bayesian Perspective*, eds. D. Dey, S. Ghosh and B. Mallick, New York: Marcel Dekker. pp 113-31.
- Chib, S. and Greenberg, E. (1996), "Markov Chain Monte Carlo Methods in Econometrics," *Econometric Theory* 12, 409-31.
- Chib, S. and Greenberg, E. (1998), "Analysis of Multivariate Probit Models," *Biometrika* 85, 347-61.
- Choi, W.G. (1999), "Asymmetric Monetary Policy Effects on Interest Rates across Monetary Policy Stances," *Journal of Money, Credit and Banking* 31, 386-416.
- Christiano, L.J., Eichenbaum, M. and Evans, C.L. (1999), "Monetary Policy Shocks: What Have We Learned and to What End?" in *Handbook of macroeconomics*, 15: Amsterdam; New York and Oxford: Elsevier North-Holland. pp 65-148.
- Dueker, M. (1999), "Conditional Heteroscedasticity in Qualitative Response Models of Time Series: A Gibbs Sampling Approach to the Bank Prime Rate," *Journal of Business and Economic Statistics* 17, 466-472.
- Dueker, M. (2000), "Are Prime Rate Changes Asymmetric?" Federal Reserve Bank of St. Louis *Review* (September/October) 82, 33-41.
- Dueker, M. and Wesche, K (2003), "European Business Cycles and their Synchronicity," *Economic Inquiry* 41, 116-31.
- Eichenbaum, M. and Evans, C.L. (1995), "Some Empirical Evidence on the Effects of

- Shocks to Monetary Policy on Exchange Rates,” *Quarterly Journal of Economics* 110, 975-1009.
- Eichengreen, B., Rose, A.K. and Wyplosz, C. (1995), “Exchange Market Mayhem: The Antecedents and Aftermath of Speculative Attacks,” *Economic Policy: A European Forum*, 0, 249-96.
- Eichengreen, B., Watson, M.W. and Grossman, R.S. (1985), “Bank Rate Policy Under the Interwar Gold Standard,” *Economic Journal* 95, 725-45.
- Estrella, A. and Mishkin, F.S. (1998), “Predicting US Recessions: Financial Variables as Leading Indicators,” *Review of Economics and Statistics* 80, 45-61.
- Frankel, J. and Rose, A. (2002), “An Estimate of the Effect of Common Currencies on Trade and Income,” *Quarterly Journal of Economics* 117, 437-66.
- Gelfand, A.E. and Smith, A.F.M. (1990), “Sampling-Based Approaches to Calculating Marginal Densities,” *Journal of the American Statistical Association* 85, 398-409.
- Hamilton, J.D. and Jorda, O. (2002), “A Model for the Federal Funds Rate Target,” *Journal of Political Economy*, 110, 1135-67.
- Herrera, A.M. (2003), “Predicting U.S. Recessions using an Autoregressive Conditional Binomial Model,” manuscript, Michigan State University.
- Kaminsky, G.L. and Lewis, K.K. (1996), “Does Foreign Exchange Intervention Signal Future Monetary Policy?” *Journal of Monetary Economics* 37, 285-312.
- Kaminsky, G.L. and Reinhart, C.M. (1999), “The Twin Crises: The Causes of Banking and Balance-of-Payments Problems,” *American Economic Review* 89, 473-500.
- Kim, C.J. and Nelson, C.R. (1998), “Business Cycle Turning Points, A New Coincident Index, and Tests of Duration Dependence Based on a Dynamic Factor Model with Regime Switching,” *Review of Economics and Statistics* 80, 188-201.
- Lewis, K. (1995), “Occasional Interventions to Target Rates,” *American Economic Review* 85, 691-715.
- Romer, C.D. and Romer, D.H. (1989), “Does Monetary Policy Matter? A New Test in the Spirit of Friedman and Schwartz,” *NBER Macroeconomics Annual* 4, 121-70.
- Rose, A.K. and van Wincoop, E. (2001), “National Money as a Barrier to International Trade: The Real Case for Currency Union,” *American Economic Review* 91, 386-90.
- Shapiro, M.D. (1994), “Federal Reserve Policy: Cause and Effect,” in **Monetary Policy** (ed Gregory Mankiw) Chicago, University of Chicago Press.
- Sims, C. (1992), “Interpreting the Macroeconomic Time Series Facts: The Effects of Monetary Policy,” *European Economic Review* 36, 975-1000.

Stock, J.H. and Watson, M.W. (2003), "How did the Leading Indicator Forecasts Perform during the 2001 Recession," Federal Reserve Bank of Richmond *Economic Quarterly* 89, 71-90.

Zellner, A., C. Hong and C-K. Min. (1991), "Forecasting Turning Points in International Output Growth Rates using Bayesian Exponentially Weighted Autoregression, Time-Varying Parameter and Pooling Techniques," *Journal of Econometrics* 48, 275-304.

Table 1: NBER Business Cycle Turning Points: 1968-2000

Peak	Trough
December 1969 (1970Q:1)	November 1970 (1970Q:4)
November 1973 (1973Q:4)	March 1975 (1975Q:1)
January 1980 (1980Q:1)	July 1980 (1980Q:2)
July 1981 (1981Q:3)	November 1982 (1982Q:4)
July 1990 (1990Q:3)	March 1991 (1991Q:1)
March 2001 (2001Q:2)	November 2001 (2001Q:4)

The dates in parentheses show the first and last quarters of the recession.

Table 2: End-of-Sample Forecasts of Recession Probabilities

Date	Probability	NBER Recession Indicator
2000Q:4	0.032	0
2001Q:1	0.169	0
2001Q:2	0.488	1
2001Q:3	0.568	1
2001Q:4	0.541	1
2002Q:1	0.455	0
2002Q:2	0.394	0
2002Q:3	0.334	0
2002Q:4	0.325	0
2003Q:1	0.311	0
2003Q:2	0.307	0
2003Q:3	0.287	0

Forecasts are based on data through 2000Q:3.

Table 3: Contemporaneous residual covariances

variables	covariance
Inflation, Romer latent	0.017 (-0.0016,0.0385)
Output growth, Romer latent	-0.049 (-0.142,0.0478)
Term spread, Romer latent	0.0658 (-0.0287,0.1462)
Fed. funds, Romer latent	-0.0823 (-0.1500,-0.001)

90 percent probability interval in parentheses

Figure 1: Posterior Mean of Latent Variable with End-of-Sample Forecasts and 80 pct. Probability Interval for 2000:Q4-2003:Q3

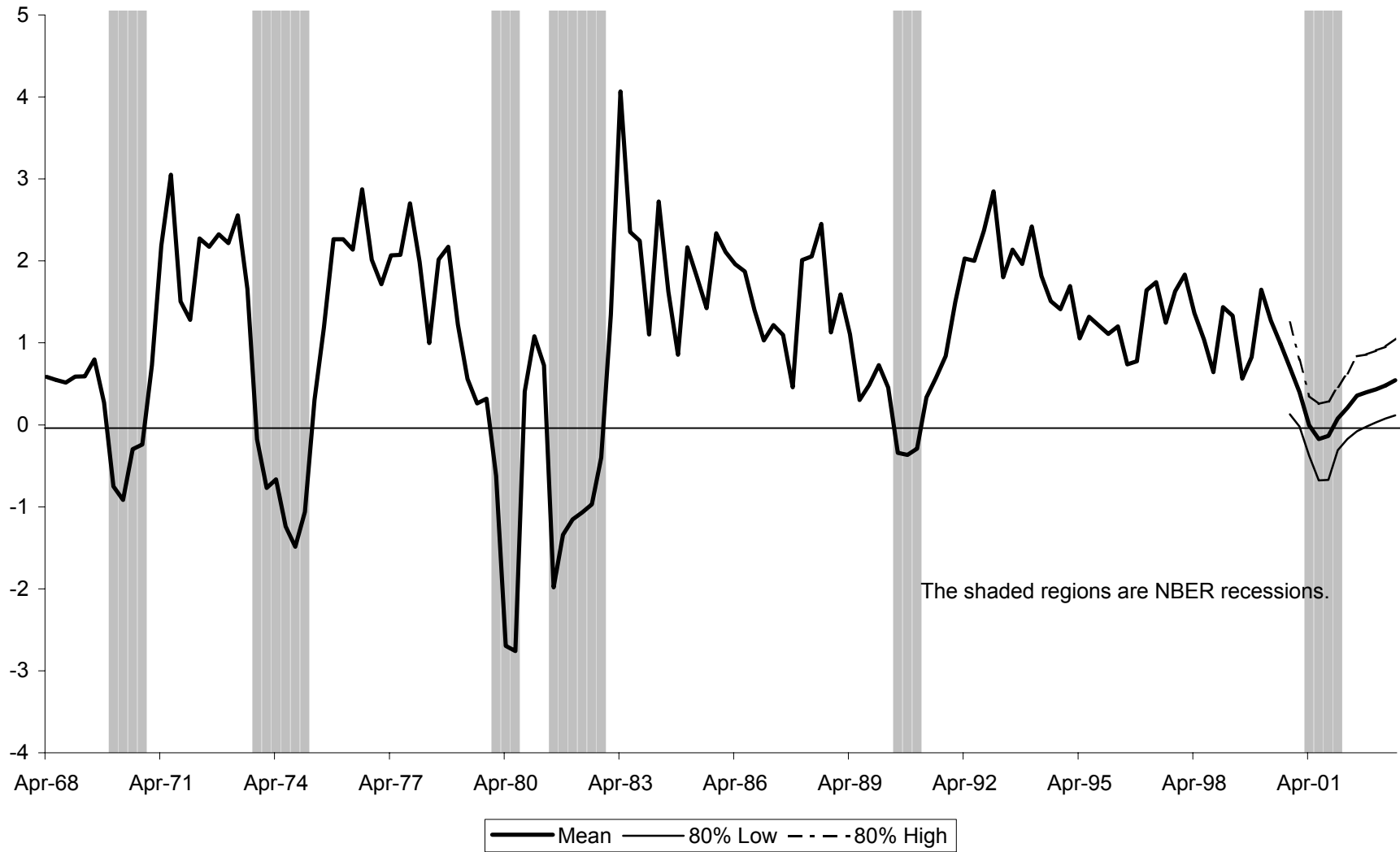


Figure 2: End-of-Sample Forecasts of Latent Variable and 80 pct. Probability Interval Starting in 2000:Q4

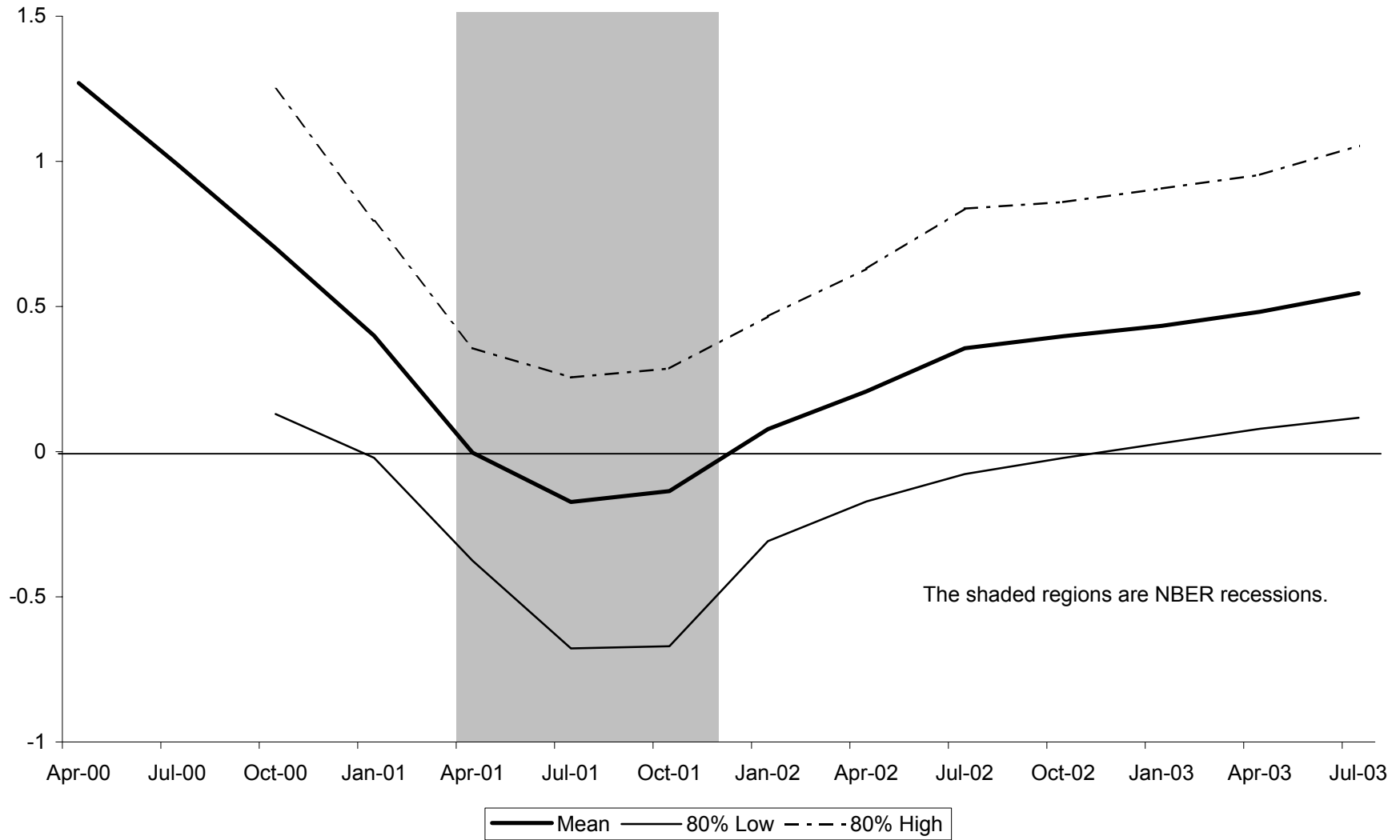


Figure 3: 12 Quarters of End-of-Sample Forecasts for CPI Inflation

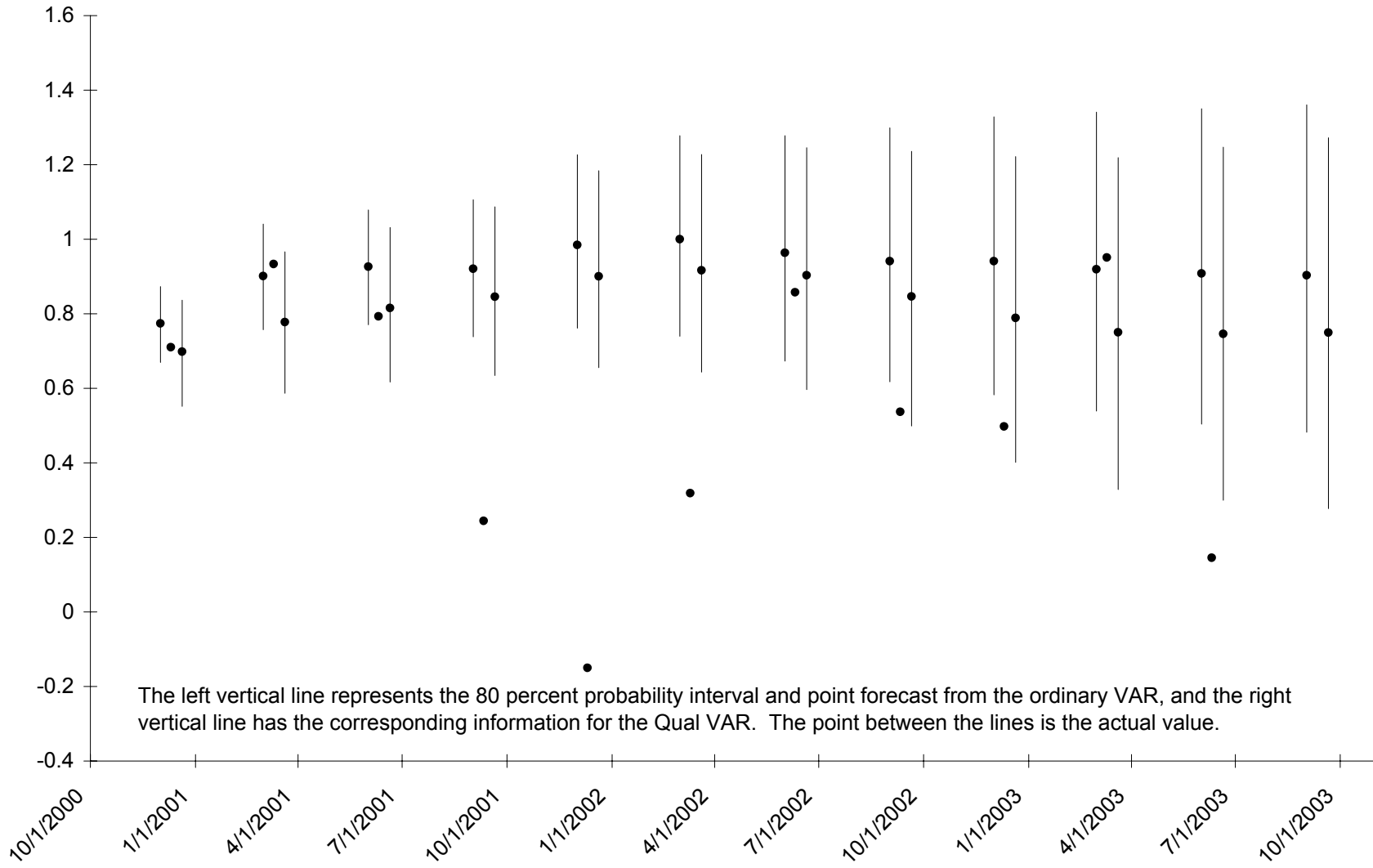


Figure 4: 12 Quarters of End-of-Sample Forecasts for GDP Growth

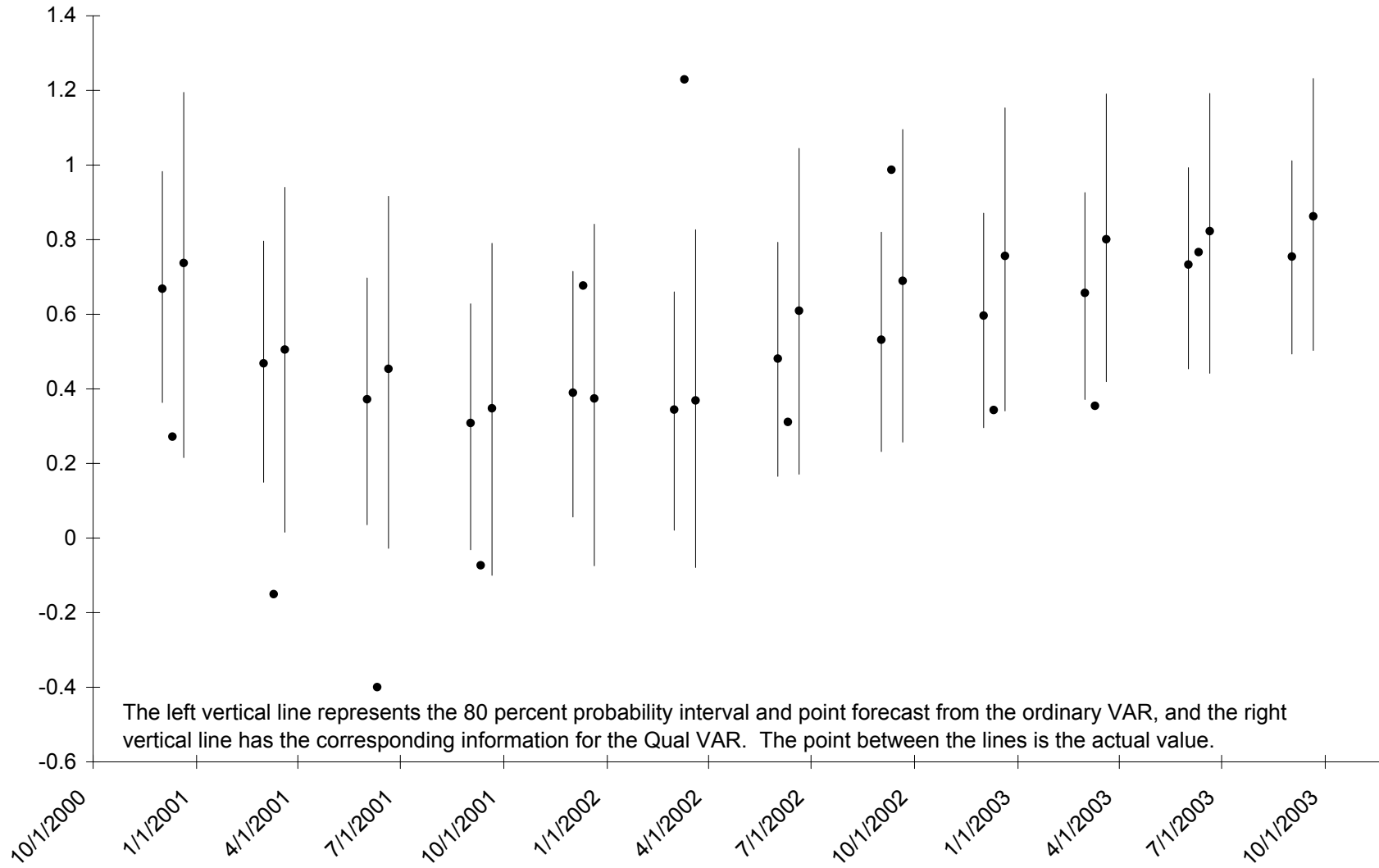
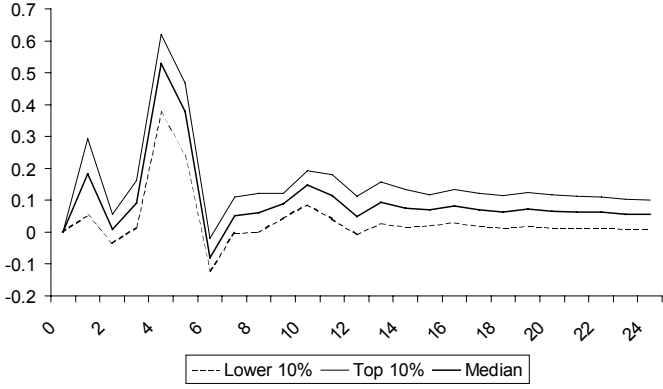
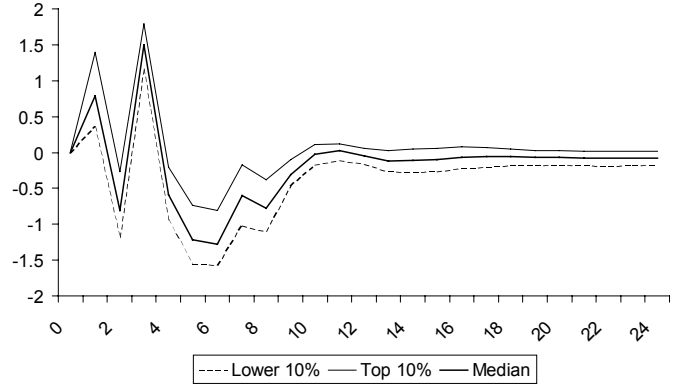


Figure 5

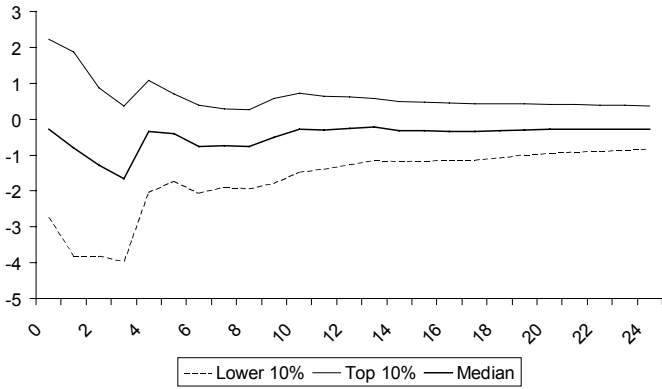
Response of Inflation to Romer Shock



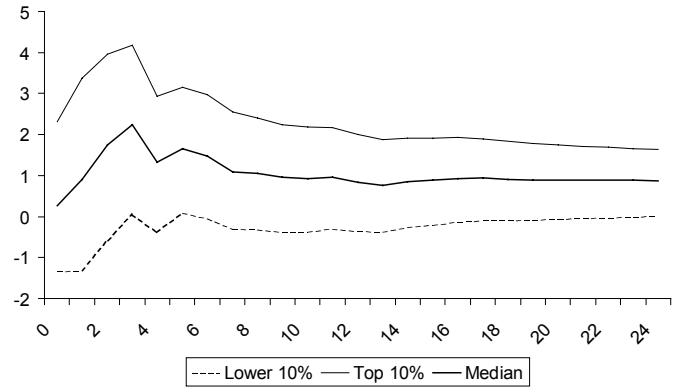
Response of Output Growth to Romer Shock



Response of Term Spread to Romer Shock



Response of Fed Funds Rate to Romer Shock



Response of Latent Romer Variable to Own Shock

